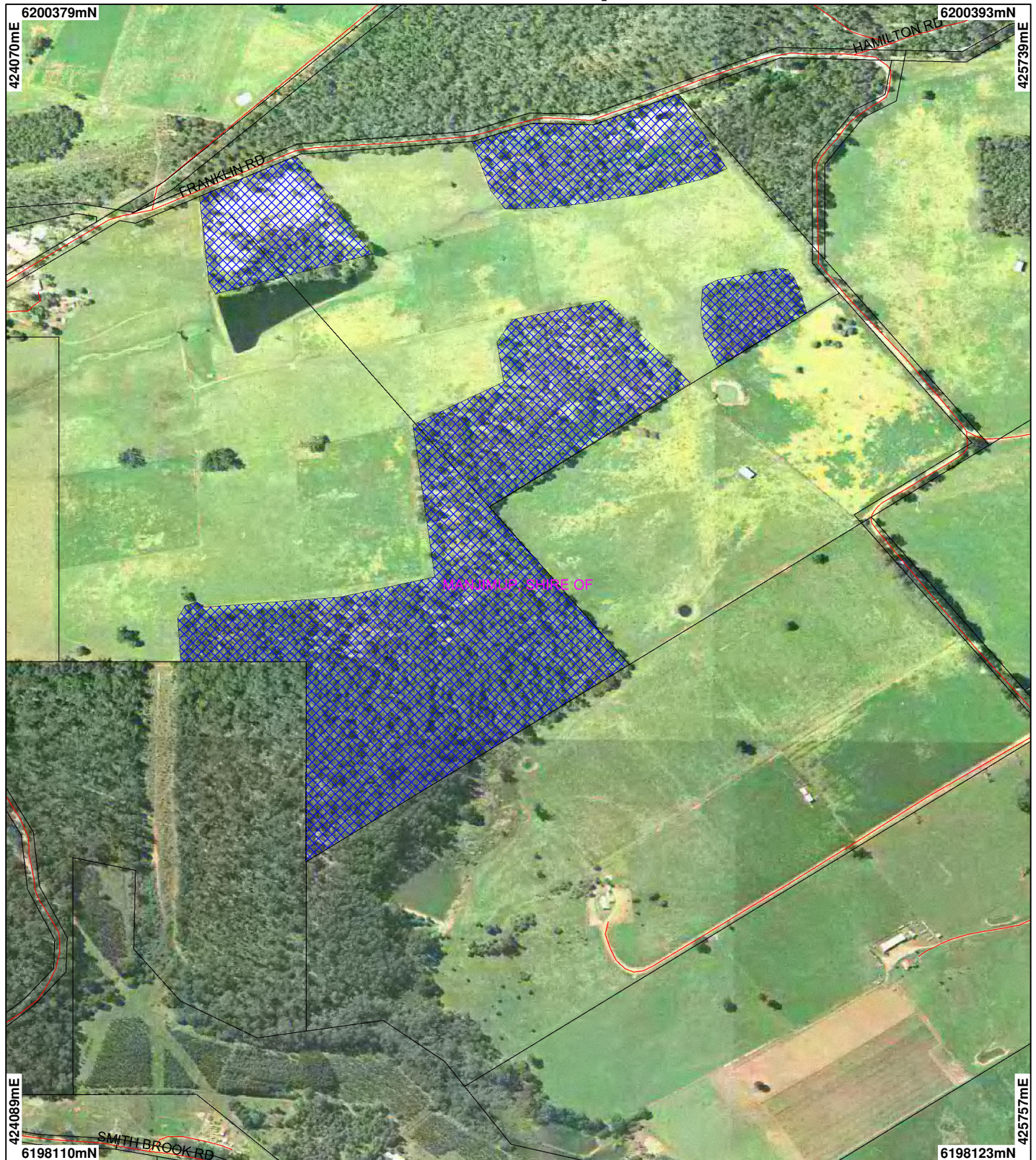
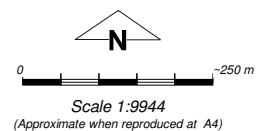


# CPS 2533 Map 2



## LEGEND

- |                                     |   |  |
|-------------------------------------|---|--|
| Augusta 1.4m Orthomosaic -<br>DLI00 | Clearing Instruments                        | Western Australia ETM+ 25m<br>543 - AGO 2000 |
| ✓ Road Centrelines                  | ■ Areas Applied to Clear                    | Pemberton 1.4m Orthomosaic<br>- DOLA 99      |
| □ Cadastre                          | ■ Areas Approved to Clear                   |  |
| ■ Local Government<br>Authorities   | Busselton 50cm Orthomosaic -<br>DLI04       |  |
|                                     | Western Australia ETM 25m<br>543 - AGO 2004 |  |



Geocentric Datum Australia 1994

Note: the data in this map have not been projected. This may result in geometric distortion or measurement inaccuracies.

..... Date .....

Information derived from this map should be confirmed with the data custodian acknowledged by the agency acronym in the legend.

